




BLUEBIRD

Spread your wings

Enterprise Touch Mobile Computer **EF550/EF550R**

Accessories Guide



Not all the features discussed in this document will apply to every unit, as some of the features are offered as options. The information contained herein is proprietary and is provided solely for the purpose of allowing customers to operate and/or service Bluebird manufactured equipment and is not to be released, reproduced, or used for any other purpose without written permission of Bluebird.

Copyright © **Bluebird Inc.** All Rights Reserved.

EF550/EF550R Series Accessory Ecosystem

Power/Cradle System:

Reduces unexpected downtime

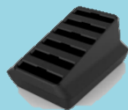
1 Slot Cradle with extra battery charger
(Ethernet Option)



4 Slot Cradle with extra battery charger
(Ethernet Option)



Battery Toaster



Replaceable Battery



Vehicle Charger



Lifespan System:

Protects the device for flexible use
as long as possible

Handstrap



Handstrap



Protective Film



Add-on System:

Expands functionality and
enables more efficient operations
with easy to use add-ons

RFID Reader



Trigger Handle



Please contact Bluebird sales rep for more information.

Single Slot Cradles



1 Slot Charging Share Cradle (CRD-EF55-RB-1SC-T1)

- Supports charging, Includes a bay for spare battery charging
- Requires 1 Slot Cradle Power Adapter and AC Power Cord

1 Slot Charging & USB/Ethernet Share Cradle (CRD-EF55-RB-1SCE-T1)

- Supports charging, USB OTG (Type C) 1ea, Ethernet 1ea, USB OTG <-> Ethernet Switch 1ea, Includes a bay for spare battery charging
- Requires 1 Slot Cradle Power Adapter and AC Power Cord
- Requires USB Type C to USB Type A Cable for single slot cradle communication.

Size: 113.5 x 168.5 x 86.3 mm
Temperature: 0 ~ 45°C (Operating), -30 ~ 70°C (Storage)

Power Adapter



- **Power Adapter**
(9V/3A)
- Requires Country Specific AC Power Cord

Additional Accessories for Single Slot Cradle



- **AC Power Cord(By Countries)**



- **USB Type C to Type A Cable**
- USB Type C to USB Type A Cable for cradle communication.

Note :

1. All Cradles can be used for both EF550 and EF550R.
2. Each cradle cup has an insert that must be removed prior to inserting the EF550R.

4 Slot Cradle



4 Slot Charging Share Cradle (CRD-EF55-RB-4SC-T1)

- Supports charging, Includes 4 bay for spare battery charging
- Requires 4 Slot Cradle Power Adapter and AC Power Cord

4 Slot Charging & USB/Ethernet Share Cradle (CRD-EF55-RB-4SCE-T1)

- Supports charging, USB OTG (Type C) 4ea, Ethernet 2ea
USB OTG <-> Ethernet Switch 1ea,
Includes 4 bay for spare battery charging
- Requires 4 Slot Cradle Power Adapter and AC Power Cord
- Requires USB Type C to USB Type A Cable for 4 slot cradle communication.

Size: 459.3 x 171.8 x 86.3 mm
Temperature: 0 ~ 45°C (Operating), -30 ~ 70°C (Storage)

Power Adapter



- **Power Adapter**
(9V/10A)
- Requires Country Specific AC Power Cord

Additional Accessories for 4 Slot Cradle



- **AC Power Cord (By Countries)**



- **USB Type C to Type A Cable**
- USB Type C to USB Type A Cable
for cradle communication.

Note :

1. All Cradles can be used for both EF550 and EF550R.
2. Each cradle cup has an insert that must be removed prior to inserting the EF550R.

6 Slot Battery Toaster



6 Slot Battery Charging Toaster (BTYC-EF55-6SC-T1)

- Supports a bay for spare battery charging up to 6 batteries
- Requires 6 Slot Cradle Power Adapter and AC Power Cord

Size: 113.5 x 168.5 x 82.3 mm
Temperature: 0 ~ 45°C (Operating), -30 ~ 70°C (Storage)

Power Adapter



- **Power Adapter**
(12V/5A)
- Requires Country Specific AC Power Cord

Additional Accessories for 4 Slot Battery Toaster



- **AC Power Cord (By Countries)**

Spare Li-ion Battery



- **Li-Ion 3.85V/4350mAh**
Support by BOS™ PowerManager



- **Li-Ion 3.85V/6160mAh**
Support by BOS™ PowerManager

With BOS™ PowerManager™ Station, you can prevent sudden downtimes and manage battery status of all devices for your business.

Battery



Li-Ion 3.85V/4350mAh
Support by BOS™ PowerManager

Li-Ion 3.85V/6160mAh
Support by BOS™ PowerManager

With BOS™ PowerManager™ Station, you can prevent sudden downtimes and manage battery status of all devices for your business.

User Replaceable

Replaceable battery helps you protect the device from being chemically aged by battery. It enables to extend the product life cycle with just changing battery, making you reduce the maintenance cost.

Supporting **Hot swap**

Enable to replace battery without turning off, hot swap support guarantees seamless working. Possible to go back on where it was if you put battery back within 1-2 mins when unexpectedly detached



Wall Charger / Adapter Plug



- **Power Adapter for Direct Charging (5V/2A)**
 - Support 1 slot USB port
 - Requires Country Specific Adapter Plug
 - Requires USB Type C to USB Type A Cable for charging.

• Adapter Plug

- Please use the adapter plug suitable for the country of use.



• Korea



• UK



• Euro



• Australia



• Brazil

USB Cable



- **USB Type C to Type A Cable**
 - USB Type C to USB Type A Cable for charging and communication.

Vehicle Magnetic Holder



- **Vehicle Cradle**

- Compatible with handstrap
- Supports AMPS hole for mounting
- Support Qualcomm Quick Charging 3.0
- Requires USB Type C to USB Type A Cable and Cigarette Light Adapter
- Optional Molex Connector and Hardwire Charging

Developed to ensure that the device is kept in place but easy to remove. Special fixtures keep the device firmly while driving on bumpy road.

CLA / USB Cable



- **CLA (Cigarette Light Adapter)**
 - One USB port to plug in the cable
 - Supports Qualcomm Quick Charging 3.0
 - Requires USB Type C to USB Type A Cable for charging.



- **CLA w/ Cable**
 - Adapter without cable available
 - Only adapter working with USB cable

Holster



EF550/EF550R Holster
- Compatible with EF550/EF550R

Size: 95 x 175 x 30 mm

Handstrap



EF550/EF550R Handstrap
- Flexible and comfortable design

Stylus / String



- **Stylus Pen**
(Conductive plastic for enterprise durability)
- Stylus Pen could be used with case
- length : 10.5cm



- **Stylus String**
- Achievable length is 70cm

Protection Film



- **Protection Film**
- High Glossy
- Anti-Fingerprint
- IK06 certified

Wearable Trigger Ring

- **Trigger Ring**

- Requires Standard / Extended Battery Cover (with 10-pin connector)
- Includes Wearable Wristband, Trigger Ring, Data Cable

- **Wristband**

- Includes comport pad / 260mm Strap for Wearable Wristband



Replacement Options



Trigger Ring for Wearable Trigger Ring

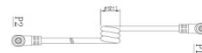
* Includes Strap & Finger Guide, Comport pad for Trigger Ring



Strap & Finger Guide for Wearable Trigger Ring



Comport pad for Wearable Trigger Ring



Data Cable for Wearable Trigger Ring



Comport pad for Wearable Wristband



Strap(260mm) for Wearable Wristband



Strap(330mm) for Wearable Wristband

* Wearable Trigger Ring for both
Standard / Extended Battery available

RFID Reader (RFR900/RFR901)



It provides faster and more accurate workflow with zero error occurrence. Bluebird RFID reader solutions allow you to obtain knowledge on tracking inventory of supplies, customer engagement both online and in-store and monitoring enterprise assets.

Trigger Handle



Ergonomically designed for ease of use, the extremely lightweight Bluebird Trigger Handle can be easily attached to Bluebird's EF550/EF550R mobile computer, making it ideal for high volume scanning applications.

Thank You



Not all the features discussed in this document will apply to every unit, as some of the features are offered as options. The information contained herein is proprietary and is provided solely for the purpose of allowing customers to operate and/or service Bluebird manufactured equipment and is not to be released, reproduced, or used for any other purpose without written permission of Bluebird.

Copyright © Bluebird Inc. All Rights Reserved.